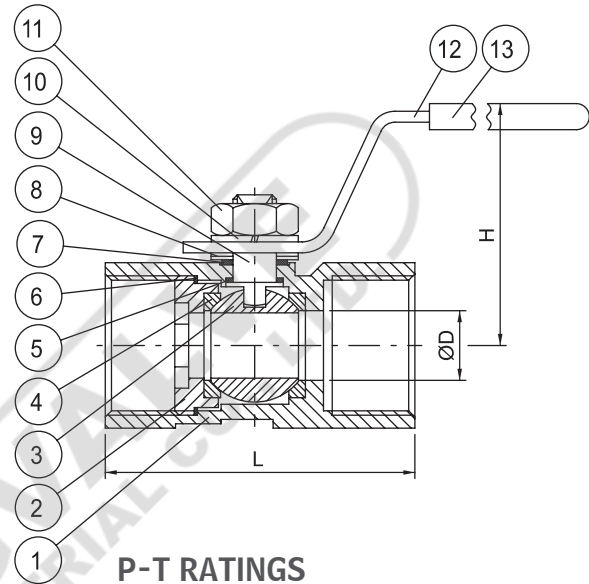
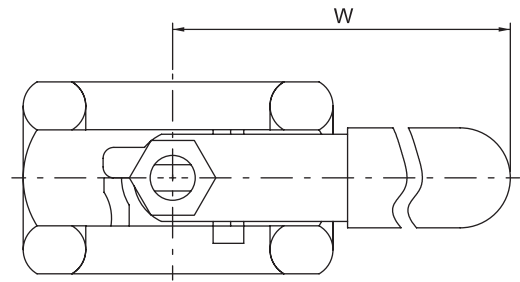


L190 One Piece Reduced Port Ball Valve

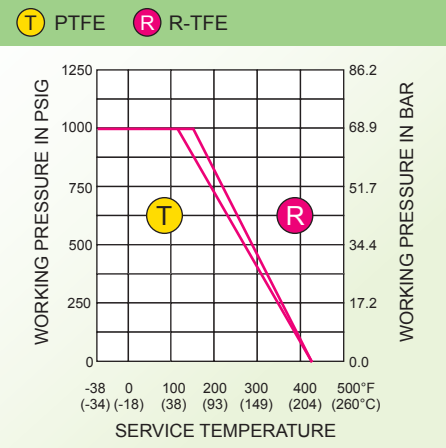
- Size Range 1/4" - 2" (DN8 - DN50)
- Pressure Rating 1000 PSI
- Materials Stainless Steel, Carbon Steel
- End Connection Threaded
- Service Application Water, Oil, Gas, Thermal Fluid, Chemicals and others
- Certifications ISO 9001-2008, PED 97/23/EC
- Operation Manual



MATERIAL LIST:

ITEM	DESCRIPTION	STAINLESS STEEL	CARBON STEEL	Q'TY
1	BODY	ASTM A351 CF8M	ASTM A216 WCB	1
2	BODY INSERT	ASTM A351 CF8M/316	ASTM A216 WCB/A108	1
3	BALL	ASTM A351 CF8M/316	ASTM A351 CF8/304	1
4	SEAT	PTFE / R-TFE	PTFE / R-TFE	2
5	THRUST WASHER	PTFE	PTFE	1
6	BODY GASKET	PTFE	PTFE	1
7	STEM PACKING	PTFE	PTFE	1
8	BELLEVILLE WASHER	AISI 301	AISI 301	2
9	STEM	ASTM A276 316	ASTM A276 304	1
10	SPRING WASHER	AISI 304	AISI 304	1
11	HANDLE NUT	AISI 304	AISI 304	1
12	HANDLE	AISI 304	ZINC PLATED STEEL	1
13	SLEEVE	VINYL PLASTISOL	VINYL PLASTISOL	1

P-T RATINGS



DIMENSIONS:

SIZE		ØD		L		H		W		Weights KG
IN	DN	IN	MM	IN	MM	IN	MM	IN	MM	
1/4"	8	0.20	5	1.54	39	1.30	33	2.76	70	0.1
3/8"	10	0.28	7	1.77	45	1.38	35	3.15	80	0.1
1/2"	15	0.35	9	2.20	56	1.65	42	3.54	90	0.2
3/4"	20	0.47	12	2.36	60	1.81	46	3.54	90	0.3
1"	25	0.63	16	2.80	71	1.97	50	4.13	105	0.4
1 1/4"	32	0.79	20	3.03	77	2.20	56	4.13	105	0.6
1 1/2"	40	0.98	25	3.27	83	2.60	66	5.12	130	0.9
2"	50	1.26	32	3.94	100	2.83	72	5.12	130	1.4