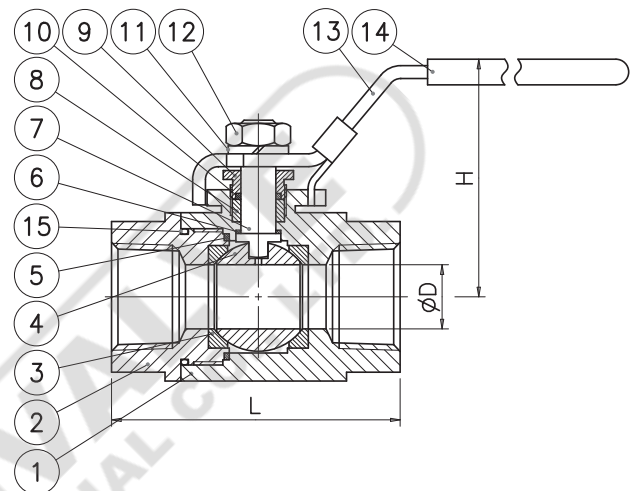
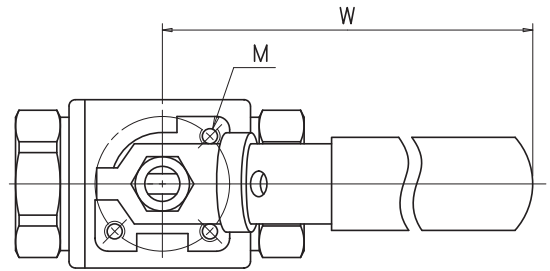


L291 Two Piece Full Port Ball Valve

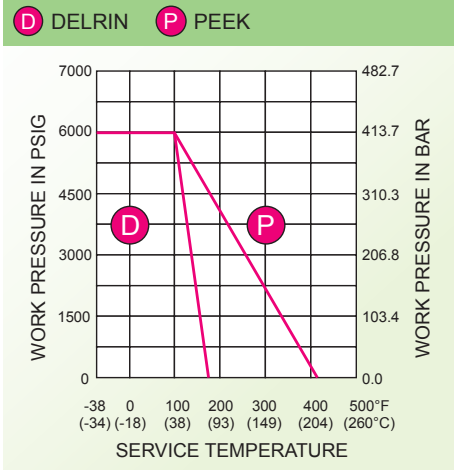
- Size Range 1/4"FP - 2"FP / 2"RP (DN8 - DN50)
- Pressure Rating 6000 PSI
- Materials Stainless Steel, Carbon Steel
- End Connection Threaded
- Service Application Water, Oil, Gas, Thermal Fluid, Chemicals and others
- Certifications ISO 9001-2008, PED 97/23/EC, ATEX 94/9/EC
- Operation Manual or Actuated



MATERIAL LIST:

ITEM	DESCRIPTION	STAINLESS STEEL	CARBON STEEL	Q'TY
1	BODY	ASTM A351 CF8M	ASTM A216 WCB	1
2	BODY CAP	ASTM A351 CF8M	ASTM A216 WCB	1
3	SEAT	DELRIN / PEEK	DELRIN / PEEK	2
4	BALL	ASTM A351 CF8M/316	ASTM A351 CF8/304	1
5	BODY GASKET	PTFE	PTFE	1
6	THRUST WASHER	PTFE	PTFE	1
7	STEM	ASTM A276 316	ASTM A276 304	1
8	STEM PACKING	PTFE	PTFE	1
9	GLAND	AISI 304	AISI 304	1
10	GLAND PACKING	PTFE	PTFE	1
11	SPRING WASHER	AISI 304	AISI 304	1
12	HANDLE NUT	AISI 304	AISI 304	1
13	HANDLE	AISI 304	ZINC PLATED STEEL	1
14	SLEEVE	VINYL PLASTISOL	VINYL PLASTISOL	1
15	BODY CAP O-RING	VITON	VITON	1

P-T RATINGS



DIMENSIONS:

SIZE		ØD		L		H		W		M	ISO 5211	Weights KG
IN	DN	IN	MM	IN	MM	IN	MM	IN	MM			
1/4"	8	0.45	11.4	2.99	76	2.36	60	5.04	128	3XM5	F03	0.6
3/8"	10	0.50	12.7	2.99	76	2.36	60	5.04	128	3XM5	F03	0.9
1/2"	15	0.50	12.7	4.02	102	2.36	60	5.04	128	3XM5	F03	0.9
3/4"	20	0.75	19.1	4.25	108	2.68	68	5.91	150	3XM5	F04	1.5
1"	25	1.00	25.4	4.49	114	3.15	80	7.09	180	3XM6	F05	2.5
1 1/4"	32	1.26	32.0	4.88	124	4.49	114	10.04	255	3XM8	F07	6.1
1 1/2"	40	1.50	38.1	5.24	133	4.88	124	10.04	255	3XM8	F07	6.0
		1.50	38.1	6.26	159	4.88	124	10.04	255	3XM8	F07	7.5
2"	50	1.50	38.1	6.26	159	4.88	124	10.04	255	3XM8	F07	7.5
		1.97	50.0	6.26	159	5.24	133	10.04	255	3XM8	F07	9.1